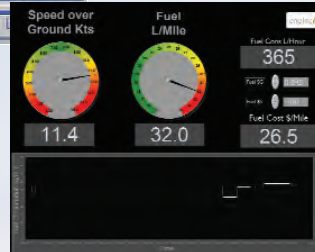


the bridge



Fuel Consumption Gauge

Showing current fuel consumption in litres per hour, tonnes per hour or other units as required. Compact 5" touch-screen unit, typically located close to the master's station. This screen also provides access for calibration and maintenance.



Fuel Optimisation Display

Detailed fuel consumption display showing consumption per mile as well as litres per hour.

This display gives the master the information he needs to optimise the operation of the vessel to minimise fuel usage whilst meeting the ship's contractual obligations.

GPS

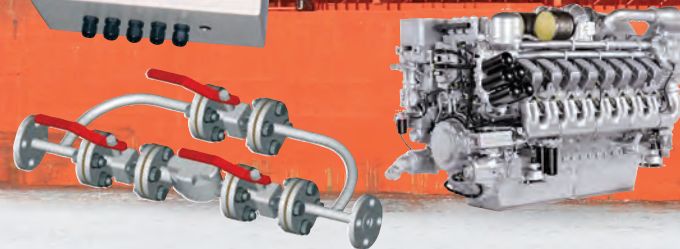
NMEA connection to the ship's GPS or to a dedicated standalone GPS if no spare ports are available on board.

Data Logger

The core of the enginei system is an advanced data collection and storage unit which accepts a very wide range of analogue and digital inputs from almost any type of sensor.



the engine room



Flow Meters

Stainless-steel positive-displacement meters for standard operation, with the option to use coriolis-type meters for heavy-fuel applications. All meters are integrated into a dedicated bypass pipework system with three stainless steel valves.

the onshore office

Data Transfer

All logged data is transmitted to the secure enginei server on shore for storage and analysis via the enginei web site. Data transmission is via the ship's existing mobile internet connection (3G/GPRS/Satellite) if possible. Alternatively, a dedicated mobile internet connection can be provided.

During normal operation the enginei system uploads a packet of fuel consumption data every 15 minutes. If the internet connection is not available – if the ship is out of 3G signal range for example – the data is stored in the internal memory of the system until the internet access is restored, and is then uploaded to the server. On-board data storage is in excess of 3 months.



Website

Fleet-wide reporting of fuel consumption, operating hours, distance travelled and many other parameters is available through the enginei web site.

Vessel tracking through Google Earth and export of raw and summary data to Excel for analysis, or as PDF reports for management information.

Operation

The system can be installed as a passive monitor which provides fuel consumption and operational information to shore-based management, or by the crew to proactively reduce fuel consumption.